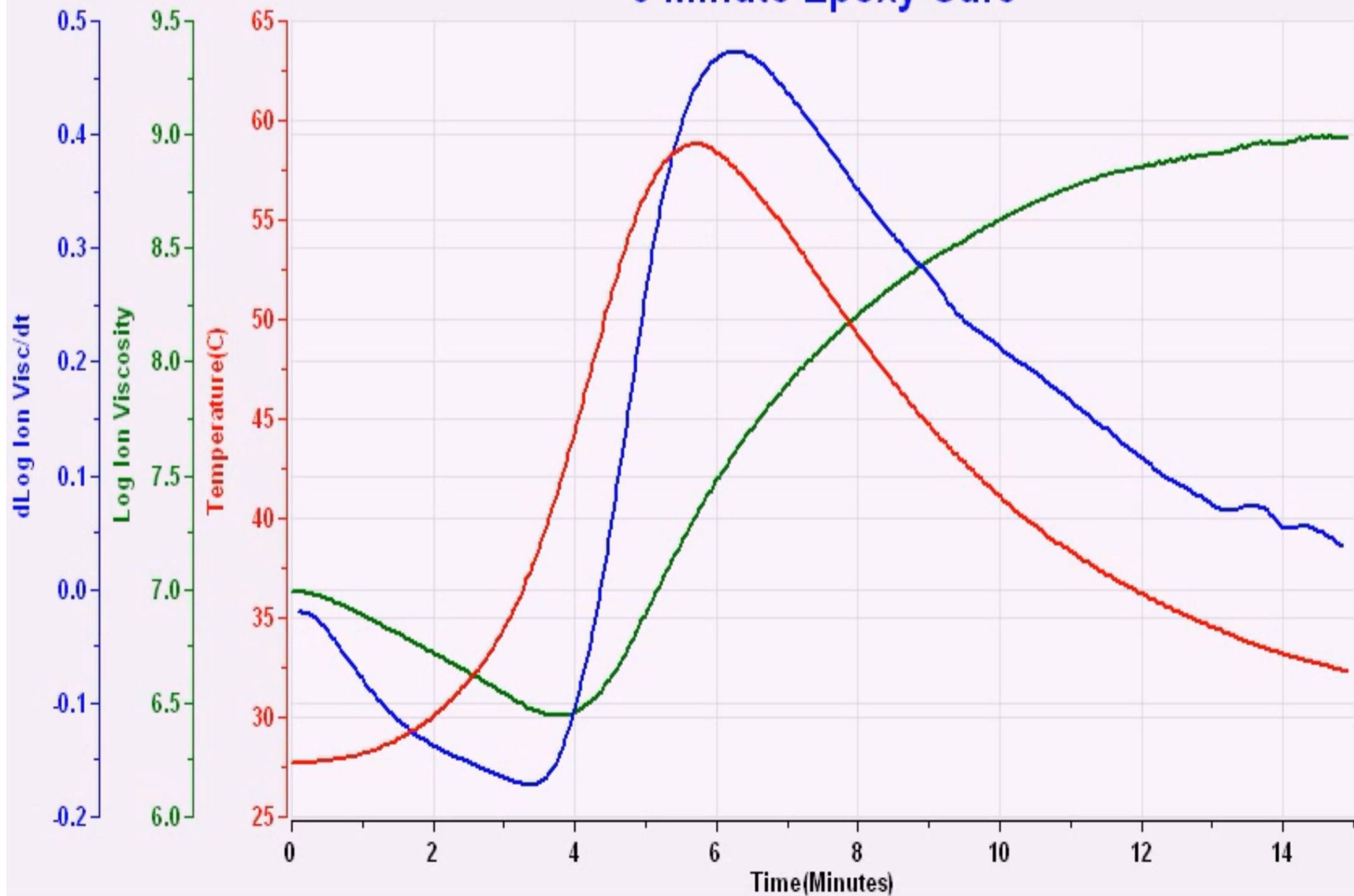
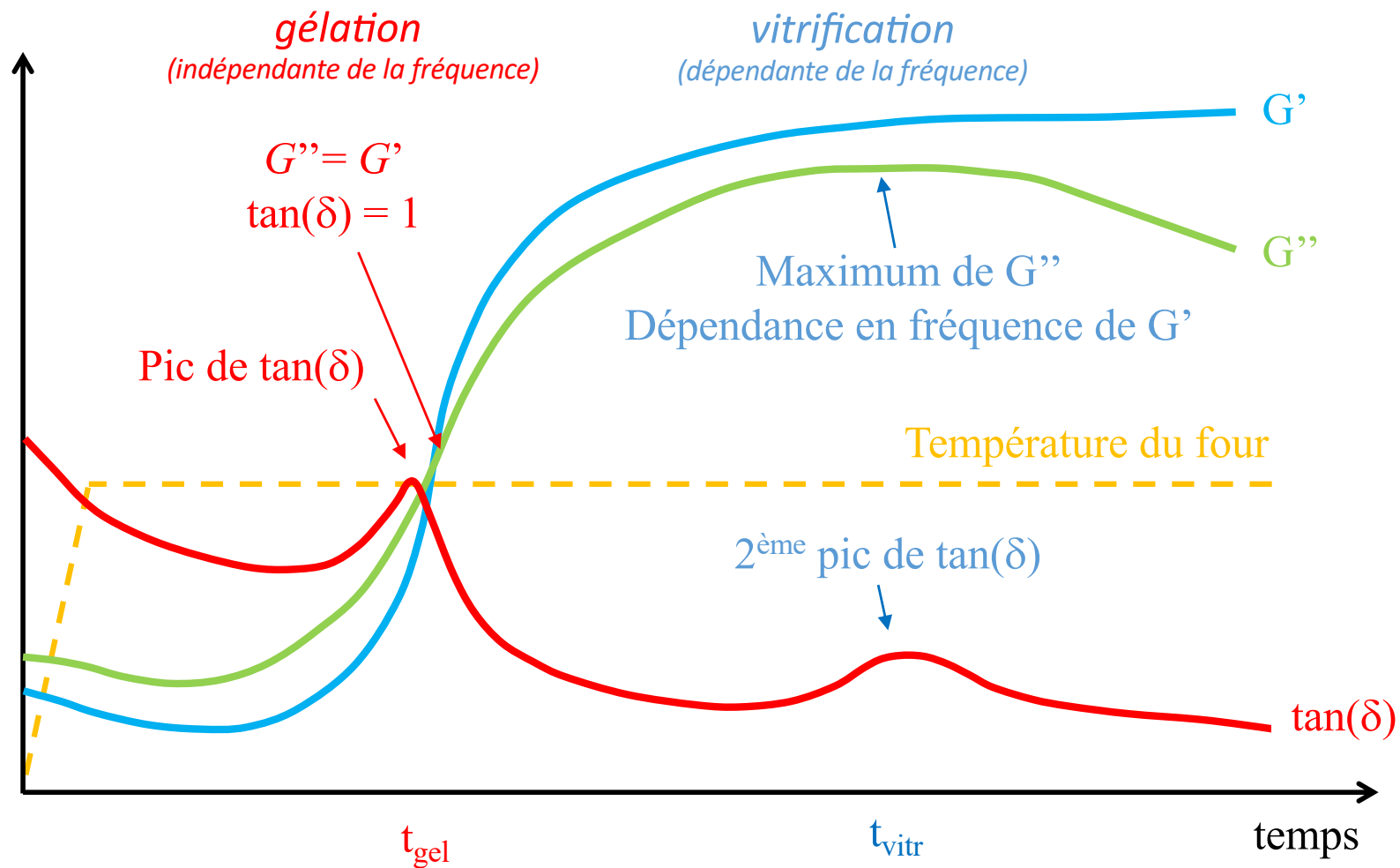
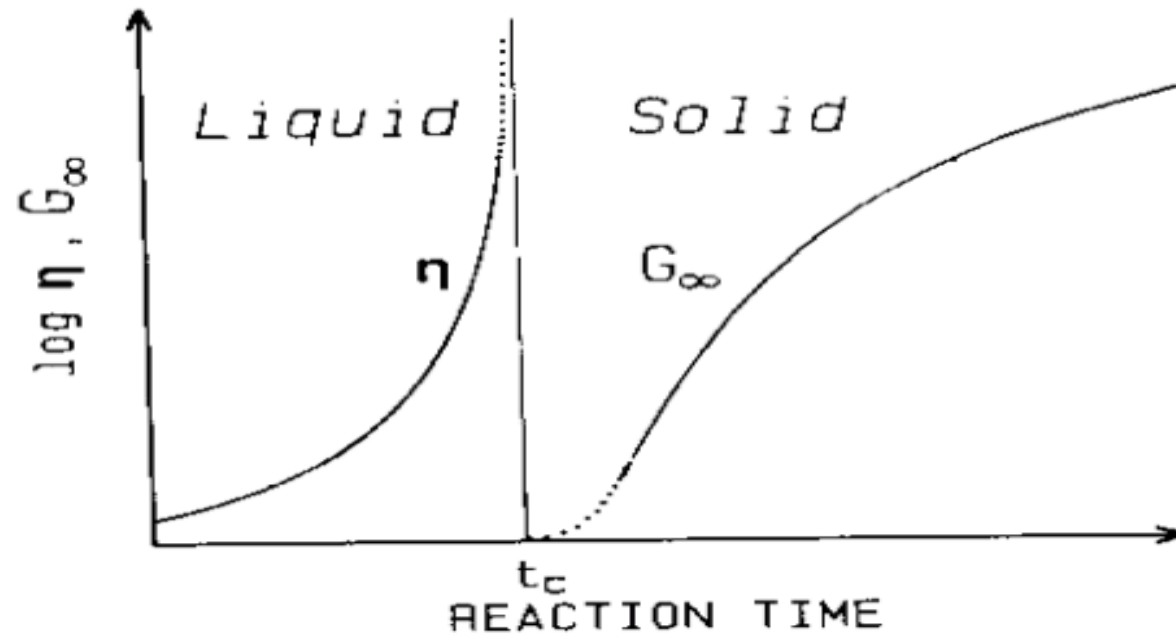


5 Minute Epoxy Cure



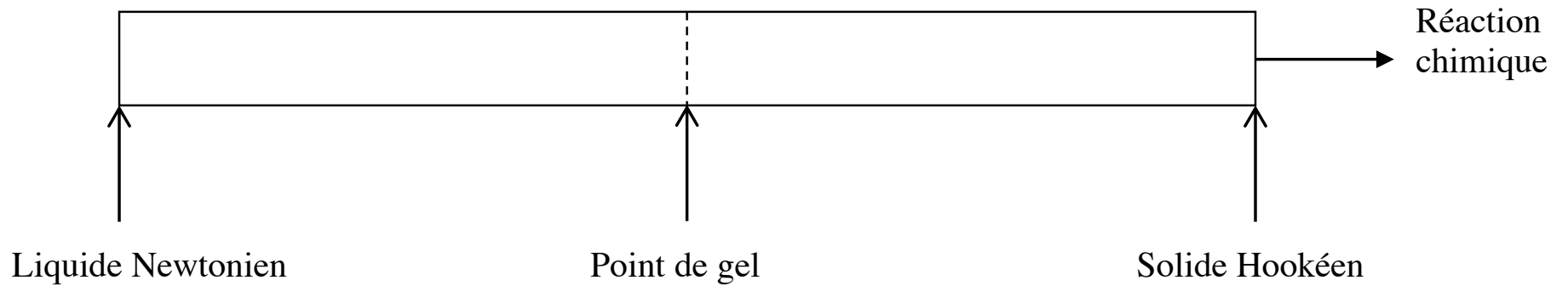
Rhéométrie oscillatoire entre plaques parallèles





Liquide viscoélastique

Solide viscoélastique



$$\tau = \eta \dot{\gamma}$$

$$\tau = S \int_{-\infty}^t (t - t')^{-\frac{1}{2}} \cdot \dot{\gamma}(t') dt$$

$$\tau = G \gamma$$

Calorimétrie différentielle à balayage

(differential scanning calorimetry, DSC)

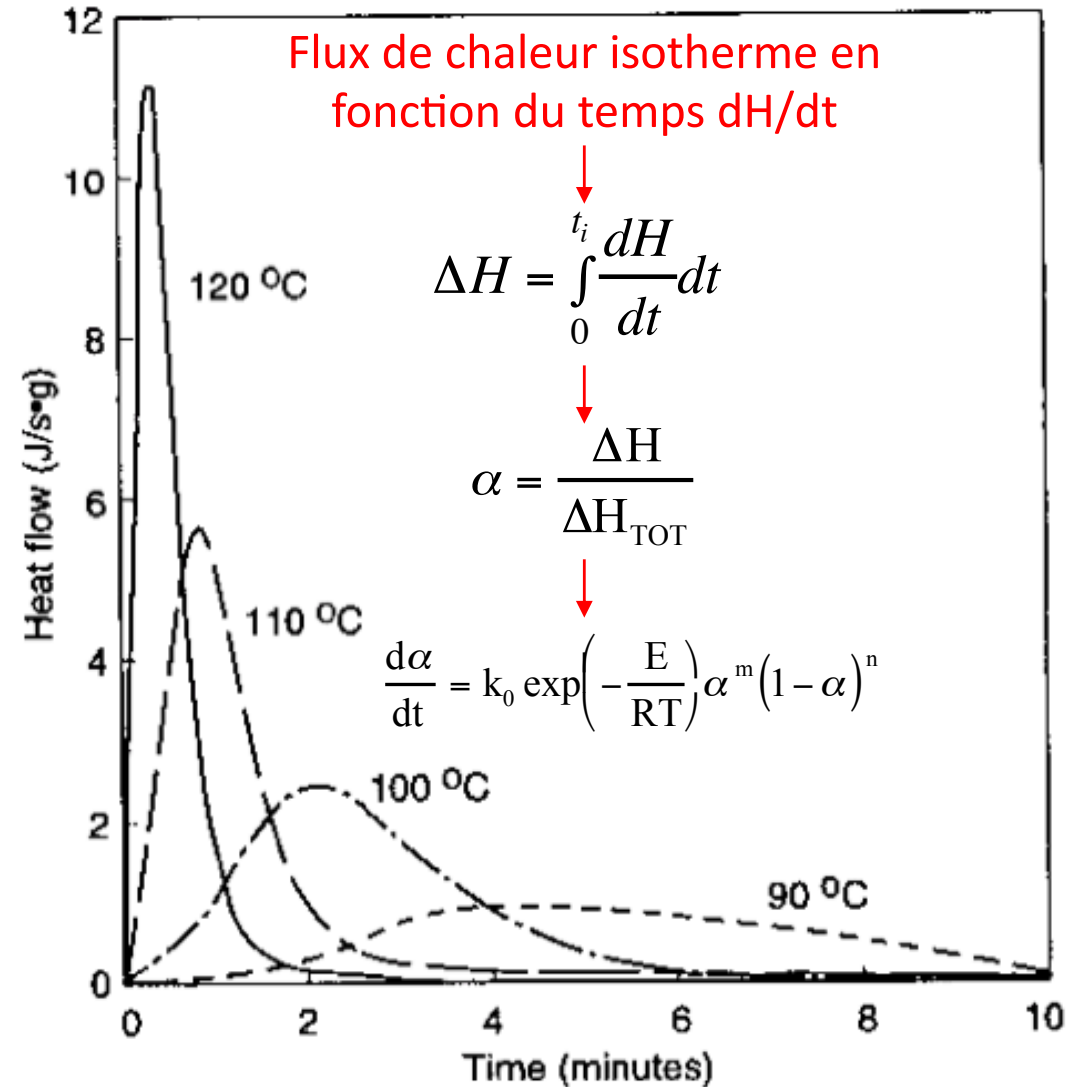
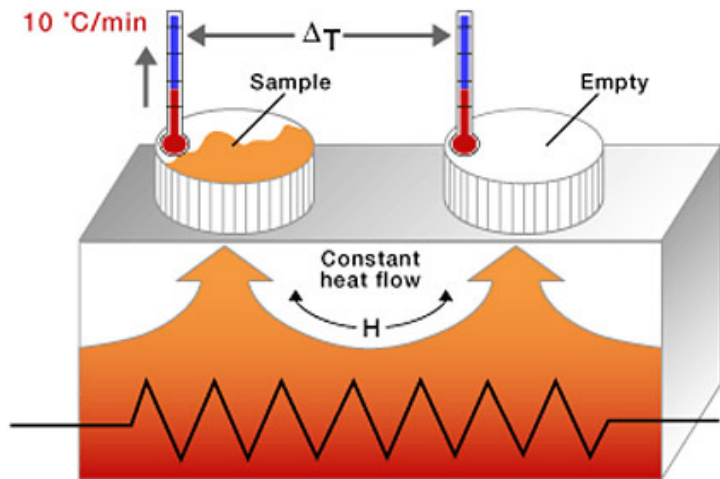


Diagramme TTT

Temps-Température-Transformation

