

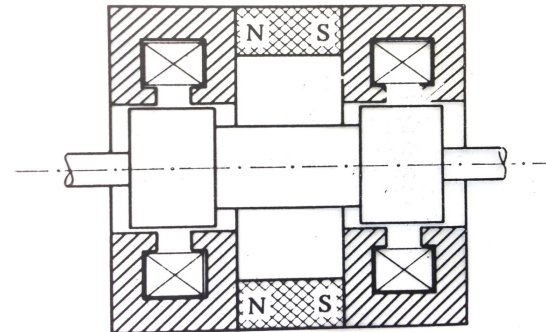
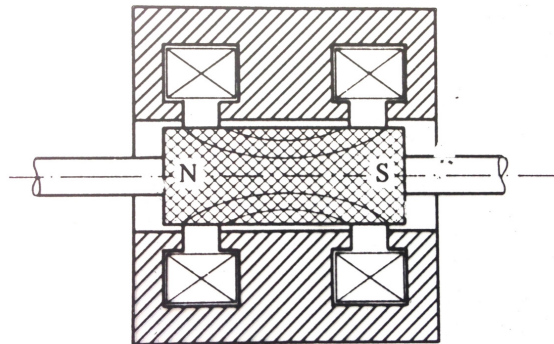
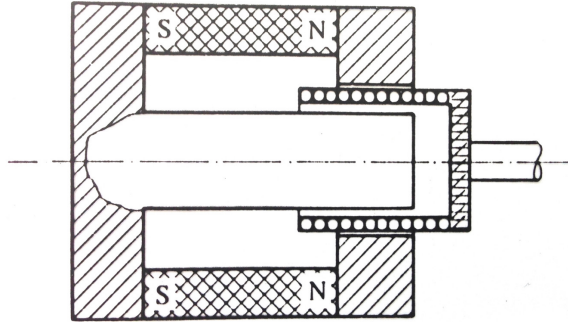
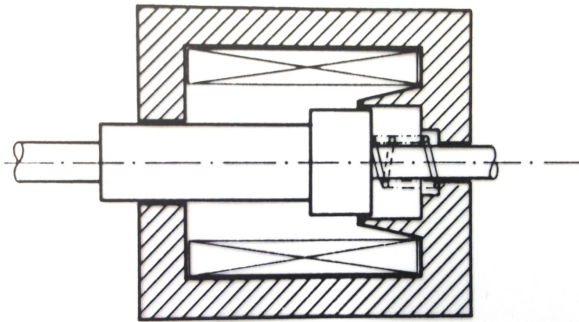


Classification

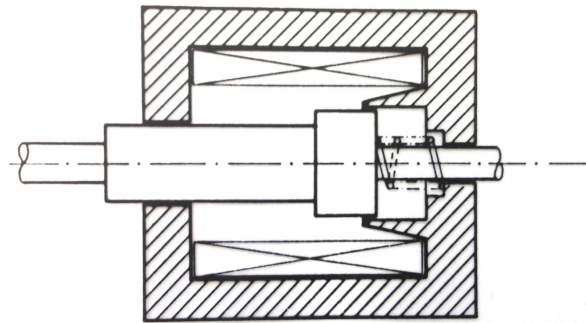
Conversion électromécanique

Prof. Perriard & Dr Koechli

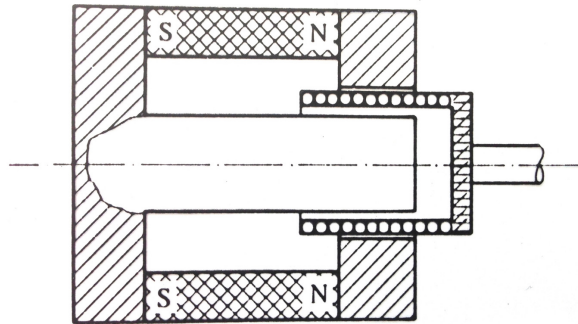
Classification



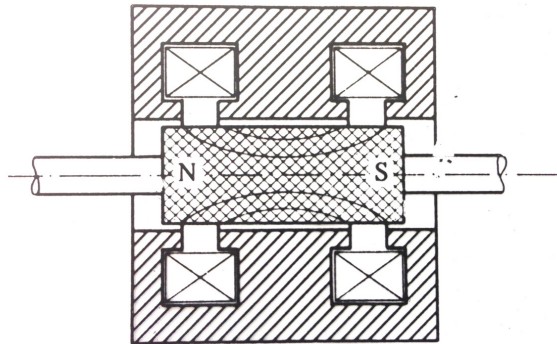
Systeme réluctant



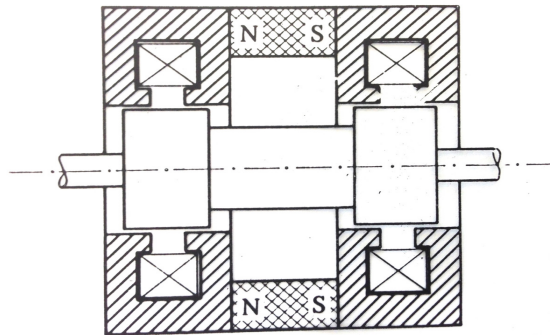
Systeme électrodynamique



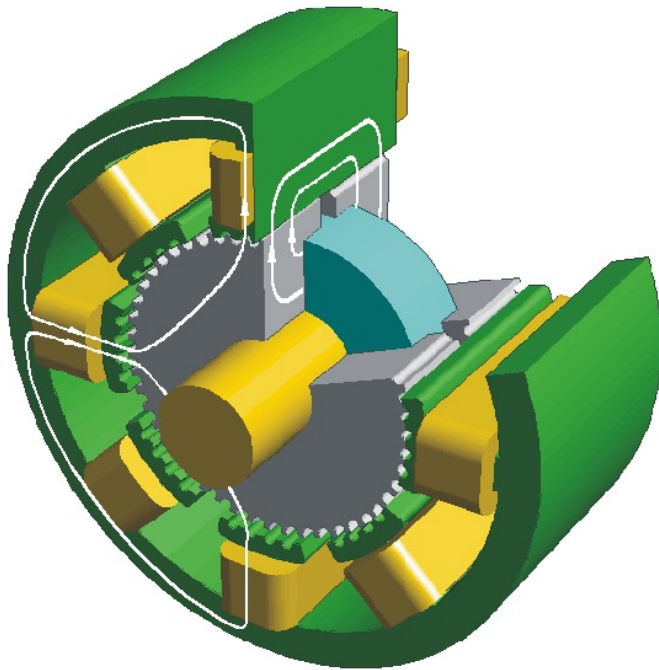
Systeme électromagnétique



Systeme hybride ou réluctant-polarisé



Variante rotative des système hybrides



- Choix d'un système de classification basé sur la présence ou non d'un aimant
- Classification en 4 différents systèmes
- Exemple et description des 4 systèmes