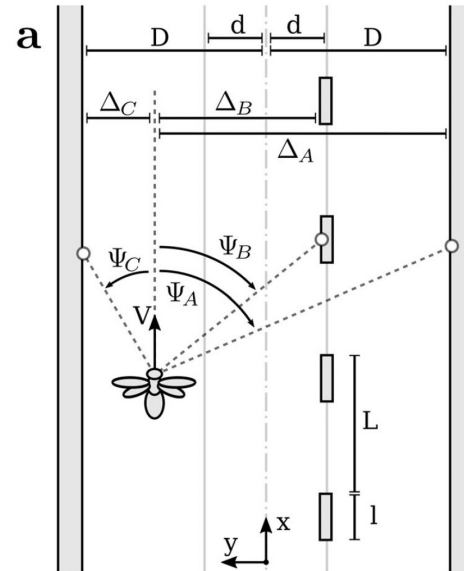


# L4-C2 Which sensor

In a publication you see the picture on the right, about a miniature flying system measuring the distance from obstacles (Fig. a, on the left), and in an environment specifically designed for this experiment (Fig. b, on the right). Based on the image, you can guess that the detection and measurement of distance to the various distinct obstacles is done by:



A: A set of 45 ultrasonic sensors, one each 4 degrees, to cover the forward motion

B: Vision with wide angle

C: One ultrasound sensor toward the front with a large angle of detection