



*Analyse des polluants dans l'environnement*

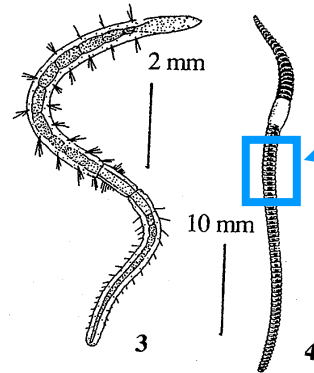
# Qualité biologique des cours d'eau

## Méthode d'appréciation intégrée



➤ **«Vers»**

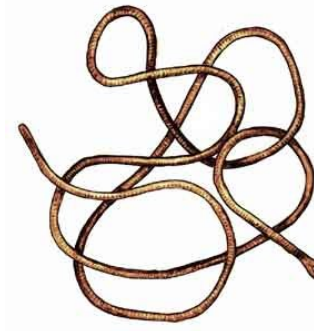
- Oligochètes



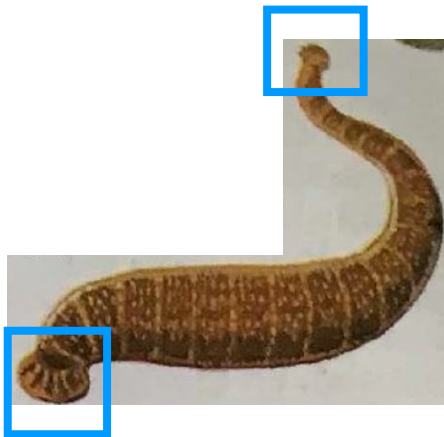
Anneaux bien individualisés



- Némathelminthes



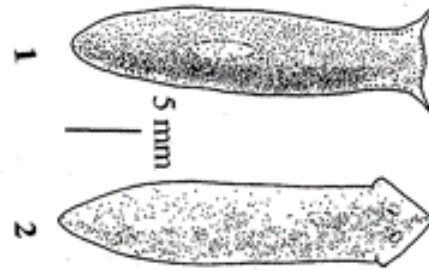
➤ **Sangsues (achètes)**



Présence de 1 ou 2 ventouses



➤ Planaires (Plathelminthes)



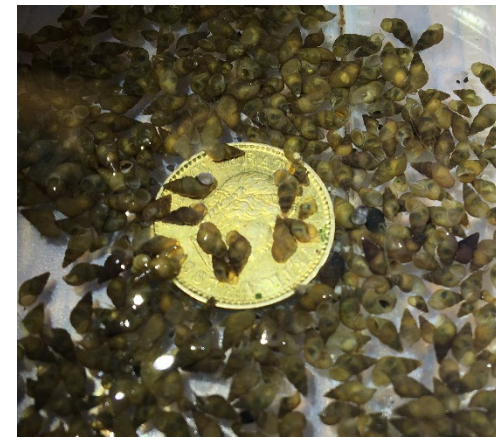
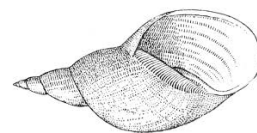
➤ Crustacés

- Gammaridae
- Asellidae



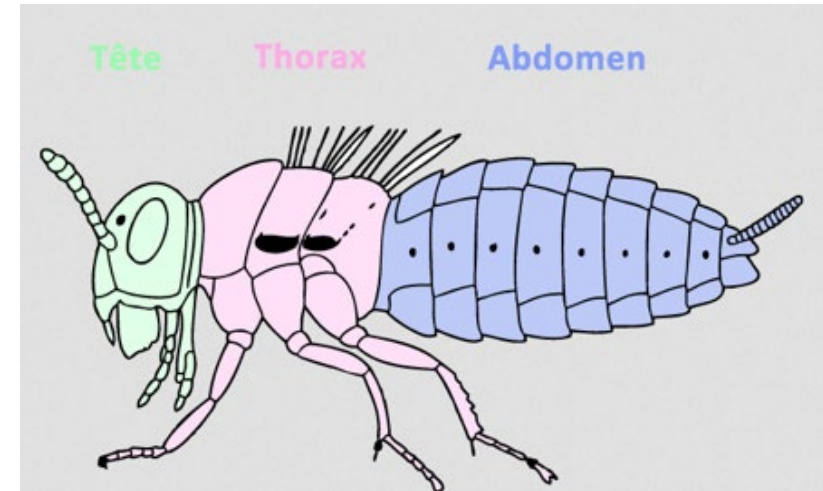
➤ Mollusques

- Bivalves
- Gastéropodes



## Insectes au stade adulte:

- Corps constitué de tête, thorax, abdomen
- 3 paires de pattes fixés sur les 3 segments du thorax



## En milieu aquatique

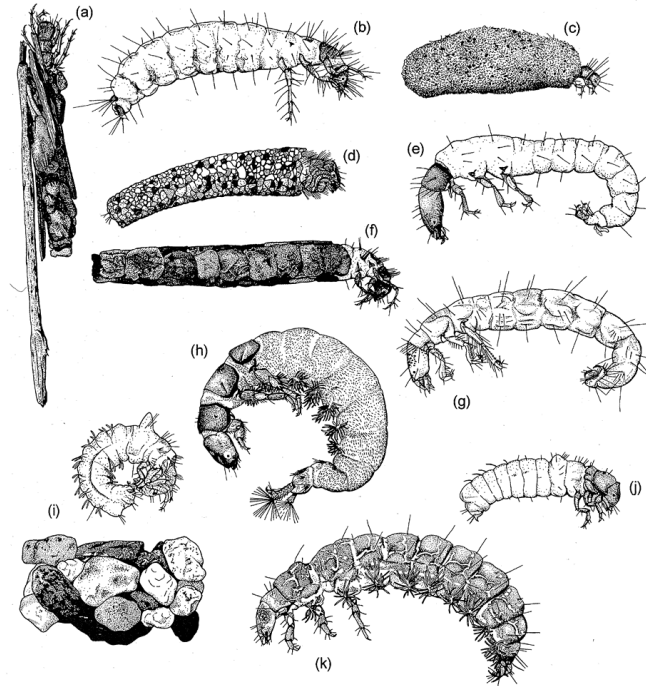
- Présence d'adulte dans certains groupe
- Majorité de **larves**



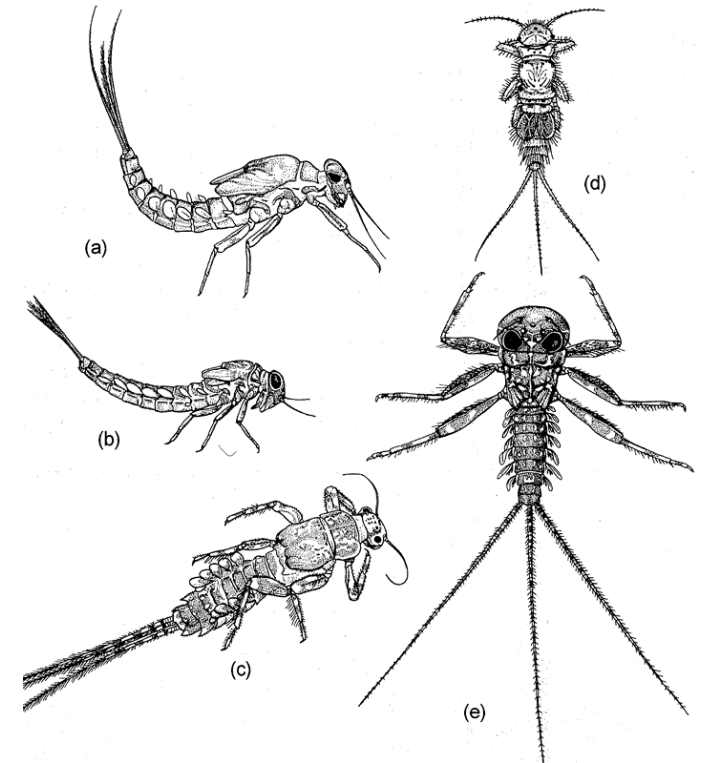
Certaines larves sont «semblables» aux adultes:



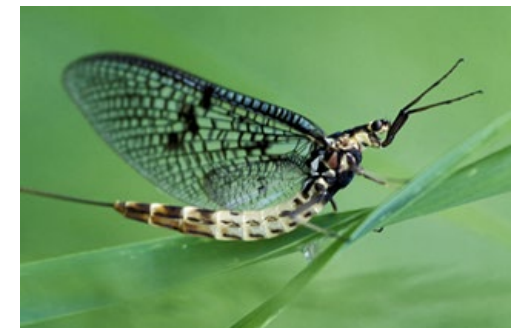
**Plécoptères**



**Trichoptères**

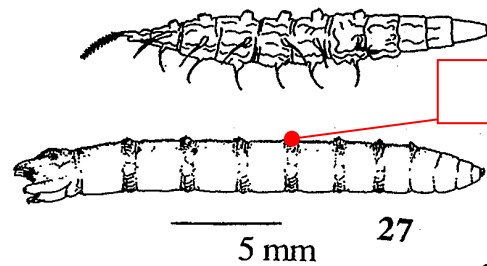
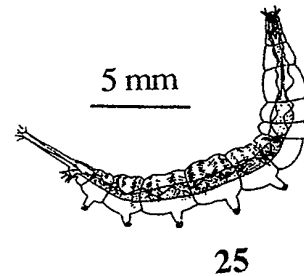
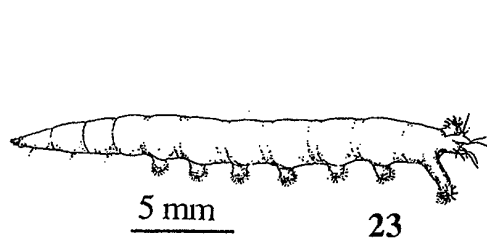
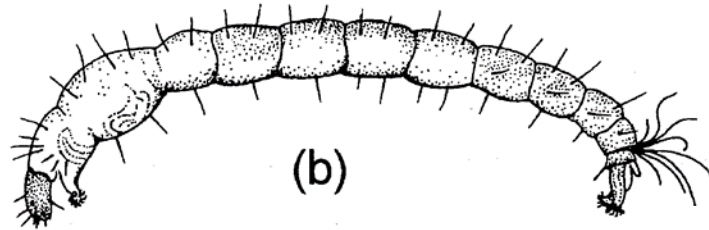
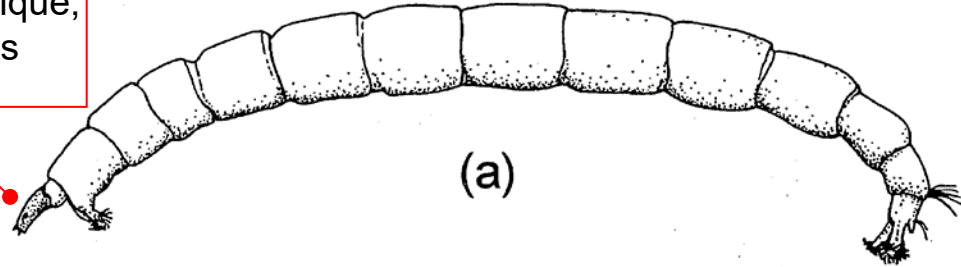


**Ephéméroptères**

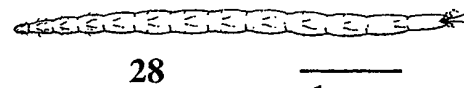
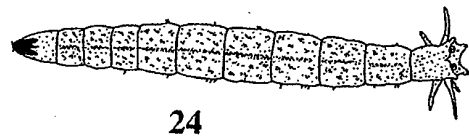


Certaines larves sont très différentes des adultes comme les diptères:

Capsule céphalique,  
yeux simples



Pseudopodes



29

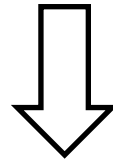
Adulte aérien



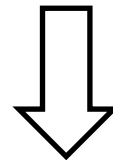
Larve

## Documents pour la détermination

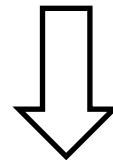
### Clé simplifiée Clé des larves d'insectes



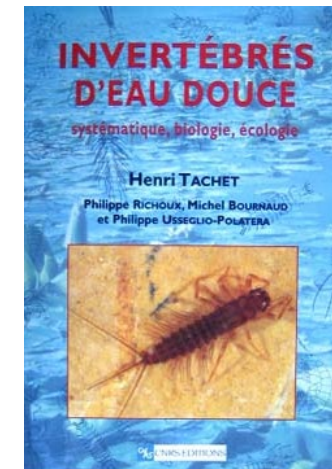
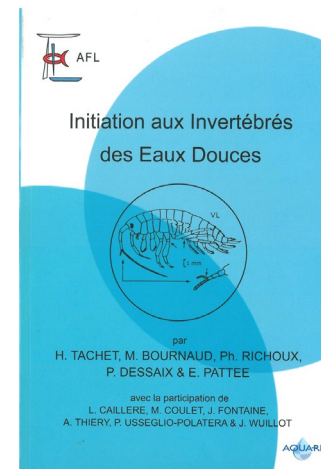
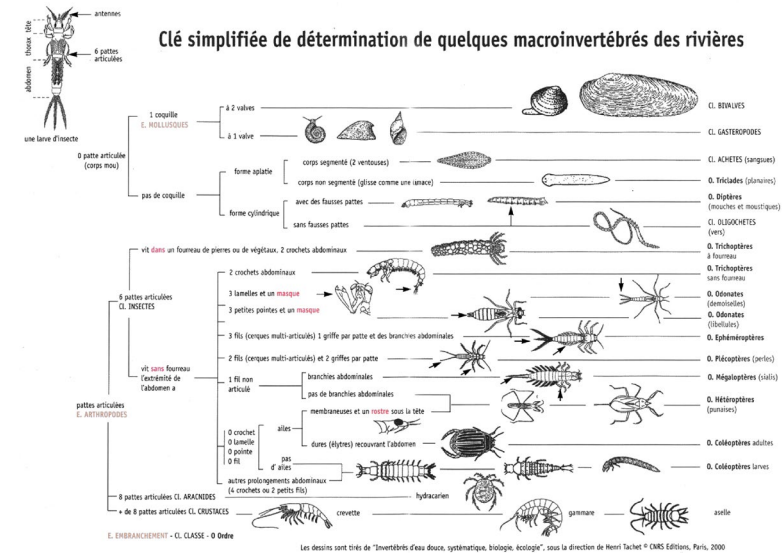
Ordre (O.)



Initiation aux invertébrés des eaux douces



Famille (F.)



Embranchement (E.)

Classe (C.)

Ordre (O.)

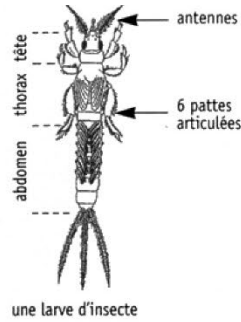
Famille (F.)



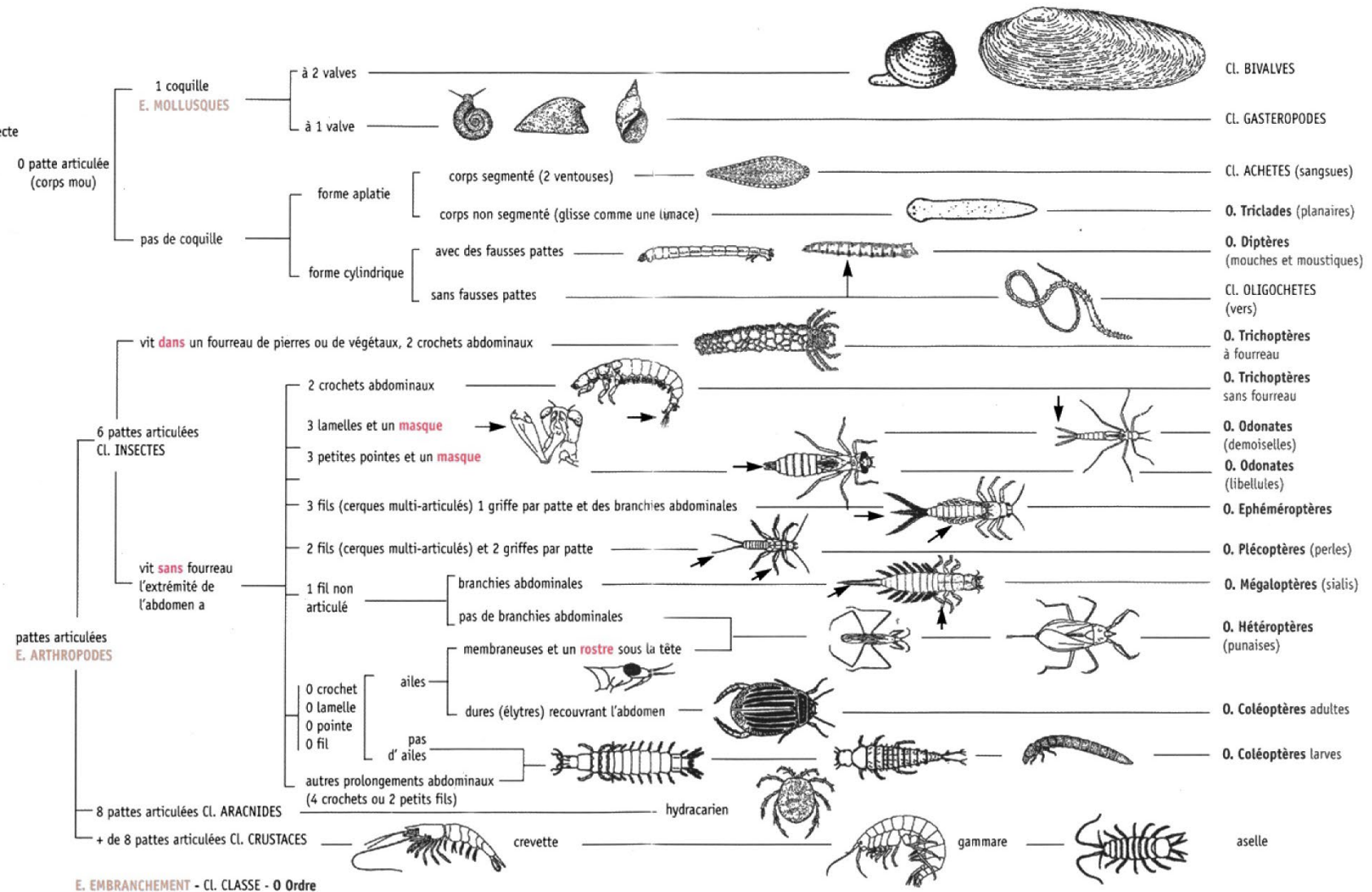
Objectifs pour 90 % des taxons

Genre (g.)

Espèce (sp.)



## Clé simplifiée de détermination de quelques macroinvertébrés des rivières



E. EMBRANCHEMENT - CL. CLASSE - O Ordre

