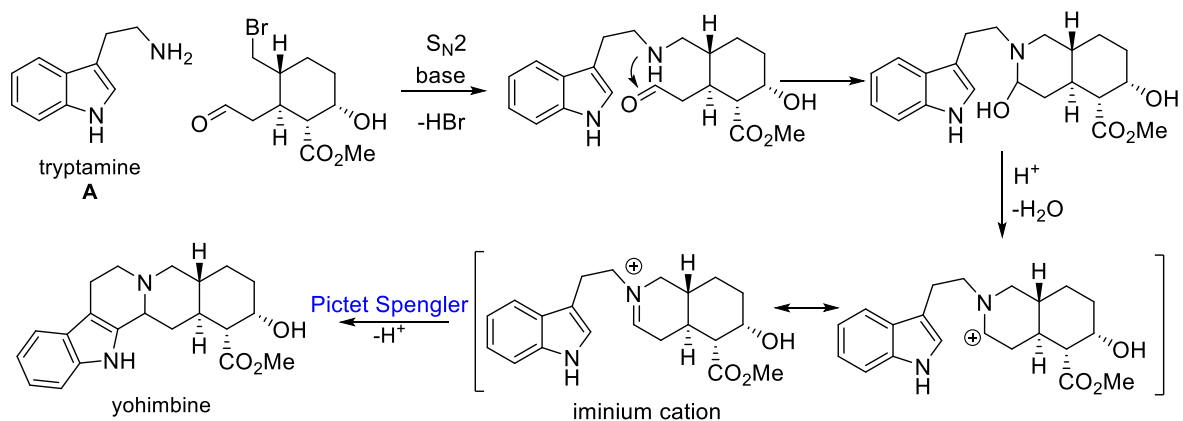
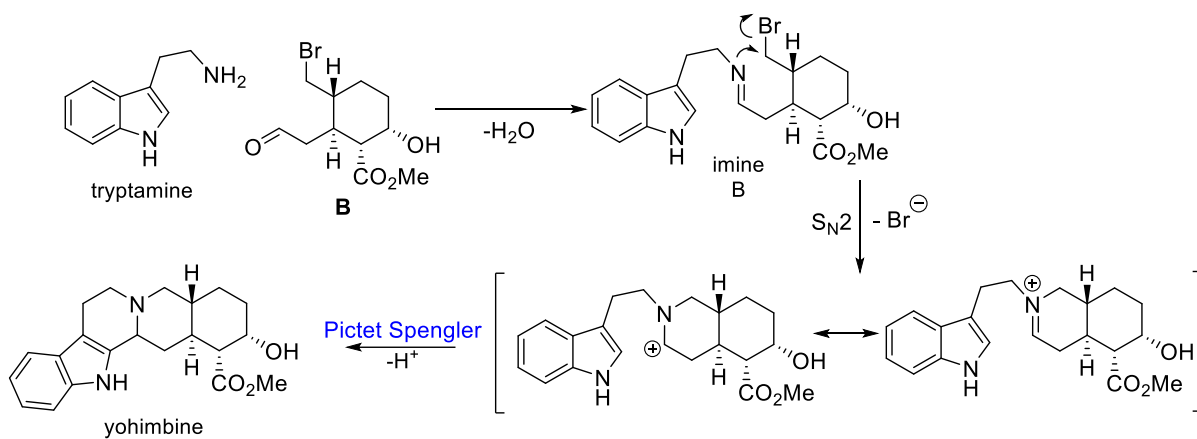


FRO-II, Problems of the Week N° 9 2025 Solutions

Question 1

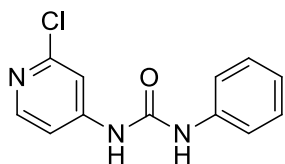


alternatively



The first route is more likely. The amine **A** is much more nucleophilic than the imine **B**, and therefore the S_N2 reaction occurs first.

Additional Exercise



forchlorfenuron, CPPU
1-(2-chloro-4-pyridyl)-3-phenylurea

